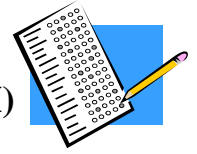




KANSAS ALTERNATE ASSESSMENT & KANSAS ASSESSMENT OF MODIFIED MEASURES (KAMM) OVERVIEW 2007-2008



General Information about Alternate Assessment

- Assessment participation is determined by the student's IEP team
- Will be administered annually
- Grades 3-8, and once in high school for reading and math.
- Writing will be given once in high school
- Social Studies will be given to students in grades 6,8 and once in high school
- Science will be given to students in grades 4,7 and once in high school
- Reading and Math results will be used to calculate AYP

Alternate Assessment Extended Standards

- Revised extended standards manuals in social studies and sciences will be available in August, 2007
- In each content area chapter 3 lists the extended indicators aligned with the general indicator being assessed at each grade level
- Important Note: *If the student being assessed scored at Exceeds Standard or Exemplary on an indicator during the previous year's alternate assessment, that indicator **may not** be chosen for this current year's assessment.*
- Extended standards available at <http://www.kansped.org/ksde/assmts/ksalt/ksalt.html>

Test Format

- The assessment will include:
 - Five extended indicators from reading from the grade level in which the student is enrolled (one each of 2 standards and three at large)
 - Five extended indicators from mathematics from the grade level in which the student is enrolled (one each of 4 standards and one at large)
 - Five extended indicators from writing from the grade level in which the student is enrolled (one each of 3 standards and two at large)
 - Five extended indicators from social studies from the grade level in which the student is enrolled (one each of 4 standards and one at large)
 - Five extended indicators from science from the grade level in which the student is enrolled (choose 5 of 7 standards)
- Data is collected during the testing window
- One scoring rubric (skill level) is to be used
- Local scoring will be accomplished by three scorers which must include the special education teacher

Required Forms

- Required forms can be found in the Alternate Assessment Teacher's Guide - <http://www.kansped.org/ksde/assmts/ksalt/ksalt.html>

- Parent permission is required for video or audio taping and photographs
- **IEP Contents**
- Students who take the alternate assessment in any content area will have IEP benchmarks or short-term objectives
- The indicators chosen for the Alternate Assessment may be listed on the student's IEP

Scores Reported

- Student performance levels will be reported
- Actual scores will be reported in the building level results at the indicator level
- One percent of the scores will be counted as "Meets Standard" or above for the district and state AYP reports

Performance Levels

- Five levels: Exemplary, Exceeds Standard, Meets Standard, Approaches Standard, Academic Warning
- Cut scores available at www.cete.ku.edu

Testing Window

- Proposed dates January 2, 2008 to April 15, 2008

General Information about Kansas Assessment of Modified Measures (KAMM)

- **For any content area assessed for KAMM the student's IEP goals *MUST* be based on grade level content standards.**
- The KAMM testing windows is the same as the general education testing window
- Only 2% of scores will be counted as Meets Standard or above for district and state AYP reports
- KAMM is based on grade level indicators
- Primarily computer-based. Paper and pencil versions will be available as an accommodation

Accommodations

- The accommodations are used for classroom instruction and classroom testing
- These accommodations provide equity rather than advantage
- Accommodations manual available at - <http://www.kansped.org/ksde/assmts/ksngen/ksngen.html>

Number of Students in a Building Required for Disaggregation

The number of students in a building required for disaggregation is thirty for ELL, ethnicity, migrant, SES, and students with disabilities (NOTE: change from 2004/05).