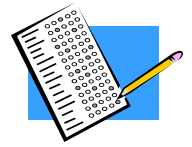




## KANSAS ALTERNATE ASSESSMENT (KAA) & KANSAS ASSESSMENT OF MODIFIED MEASURES (KAMM) FACT SHEET 2011-2012



### GENERAL INFORMATION ABOUT THE ALTERNATE ASSESSMENT

- Student participation in the Alternate Assessment is determined by the student's IEP team.
- The Kansas Alternate Assessment is administered annually.
- The Reading and Math Alternate Assessment is administered in grades 3-8, and once in high school.
- The Alternate Assessment for Science is administered in grades 4, 7, and once in high school.
- **The Alternate Assessment for History-Government will be administered to 6, 8, OTL 10 and Cohort 12.**
- The results for the Reading and Math Assessments are used to calculate AYP.
- All indicators must be picked by December 31, 2011.
- Students new to a district after December 31, 2011 will not be assessed

### ALTERNATE ASSESSMENT EXTENDED STANDARDS

- Chapter 1 lists the extended indicators aligned with the general indicator being assessed at each grade level in each content area.
- If a student received a 4 or 5 on an indicator last year they will not be able to use that indicator in 2011-2012 school year
- *Extended standards are available at <http://www.ksde.org/Default.aspx?tabid=2384>*

### ASSESSMENT FORMAT

- The assessment includes:
  - five extended indicators from Reading at the grade level in which the student is enrolled (one each of 2 standards and three at large);
  - five extended indicators from Math at the grade level in which the student is enrolled (one each of 4 standards and one at large);
  - five extended indicators from Science at the grade level in which the student is enrolled (one indicator from the first four standards and the last indicator from any standard.
  - **New this year** - when picking indicators for science the team must pick at least two indicators at a higher level than knowledge on the Bloom taxonomy, use Science Blooms taxonomy Guide at <http://www.ksde.org/Default.aspx?tabid=420>
  - **Five extended indicators from History-Government Extended Standards (one indicator from each of the four standards and the last indicator from any standard)**
- Data are collected only during the testing window.
- The Scoring Rubric is used for scoring the Alternate Assessment.
- Local scoring will be conducted by three scorers; one of the scorers must include the special education teacher.
- By Dec. 1, 2011, sign off by a special or general education administrator will need to take place to verify the following in order to meet the Dec. 31, 2011 deadline:
  - Indicators must be aligned to the activities chosen.
  - No functional activities can be used for the KAA.
  - Assessable activities need to be used for the KAA; opinions are not appropriate assessable activities.
- Scoring.
  - Scorers should not enter scores on CETE only Recorders
- *All areas on the evidence label must be filled out completely.*

- Scores are confidential and are sent to the recorder individually
- Scores are only given to evidence provided, if no evidence in the portfolio then the piece of evidence receives a "0"

### REQUIRED FORMS

- Required forms can be found at <http://www.cete.us>
- The CETE evidence label must be used this year.

### IEP CONTENTS

- Students who take the Alternate Assessment in any content area must have IEP benchmarks or short-term objectives for all goals.
- The indicators chosen for the Alternate Assessment do not have to be listed on the student's IEP.

### SCORES REPORTED

- Student performance levels are reported to schools and parents.
- Only 1% of KAA scores are counted as "Meets Standard" or above for district and state AYP reports.
- All scores must be entered by April 30, 2012

### PERFORMANCE LEVELS

There are five levels: Exemplary, Exceeds Standard, Meets Standard, Approaches Standard, and Academic Warning. Cut scores are available at <http://www.ksde.org/Default.aspx?tabid=420>

### TESTING WINDOW

The proposed testing window dates are at <http://www.ksde.org/Default.aspx?tabid=420>

### RECENTLY ARRIVED STUDENTS

- Students taking the Alternate Assessment who enroll in a different school after December 31, 2011 are exempt.
- *Indicators cannot be registered after December 31, 2011.*

### GENERAL INFORMATION ABOUT KANSAS ASSESSMENT OF MODIFIED MEASURES (KAMM)

*For any content area assessed using the KAMM, the student's IEP goals MUST be based on grade level content standards.*

- The KAMM testing window is the same as the general education testing window.
- Only 2% of KAMM scores are counted as "Meets Standard" or above for district and state AYP reports.
- KAMM is based on grade level indicators.
- KCA is required for the KAMM. A paper and pencil version is available **ONLY** as an accommodation.

### ACCOMMODATIONS

- The accommodations are used for classroom instruction and classroom testing.
- *The Accommodations Manual is available at <http://www.ksde.org/Default.aspx?tabid=420>*

### CONTACTS

Debbie Matthews, Special Education Assessment Consultant,  
KSDE [dmatthews@ksde.org](mailto:dmatthews@ksde.org) 785.296.0916